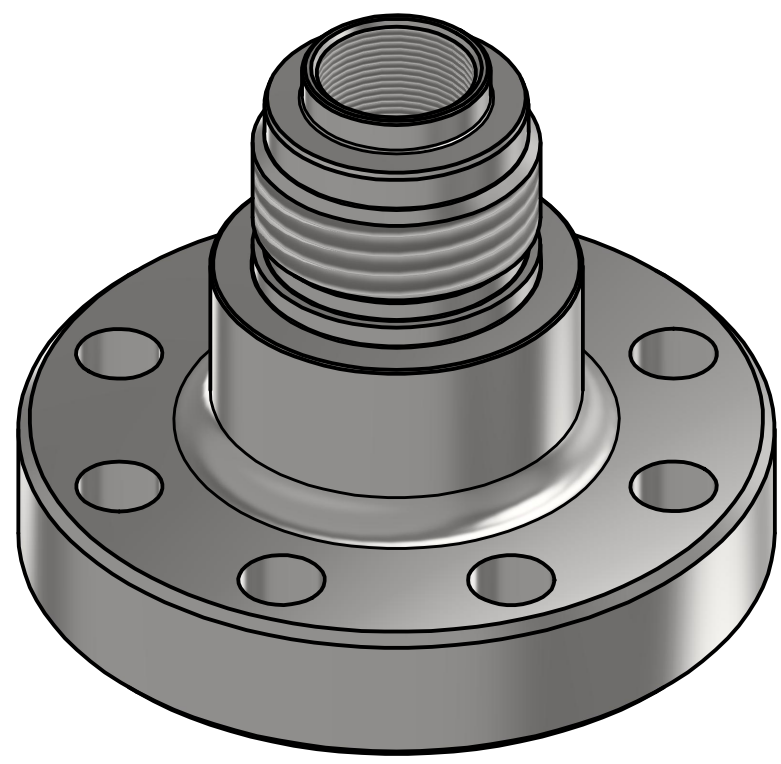


DO NOT SCALE

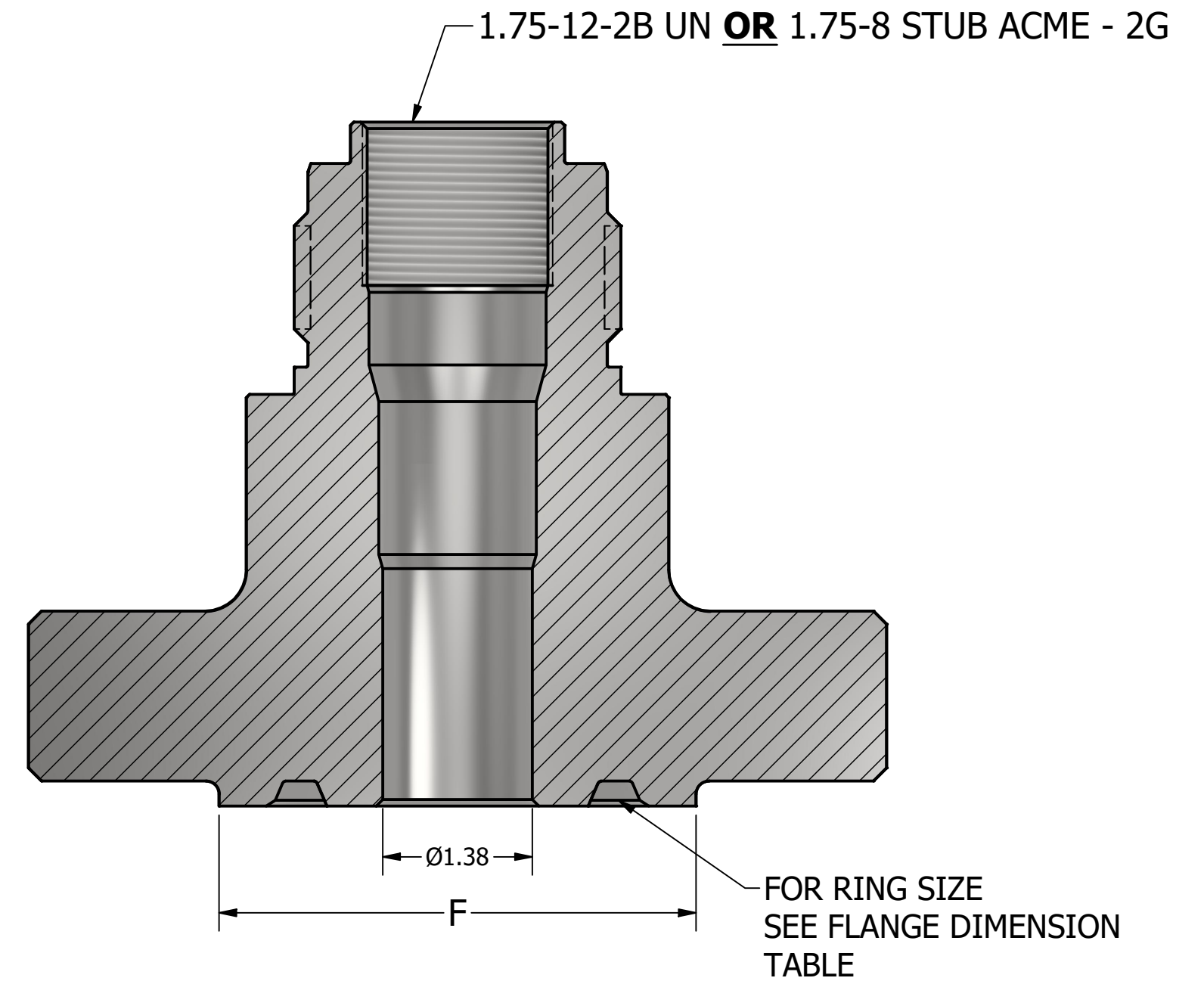
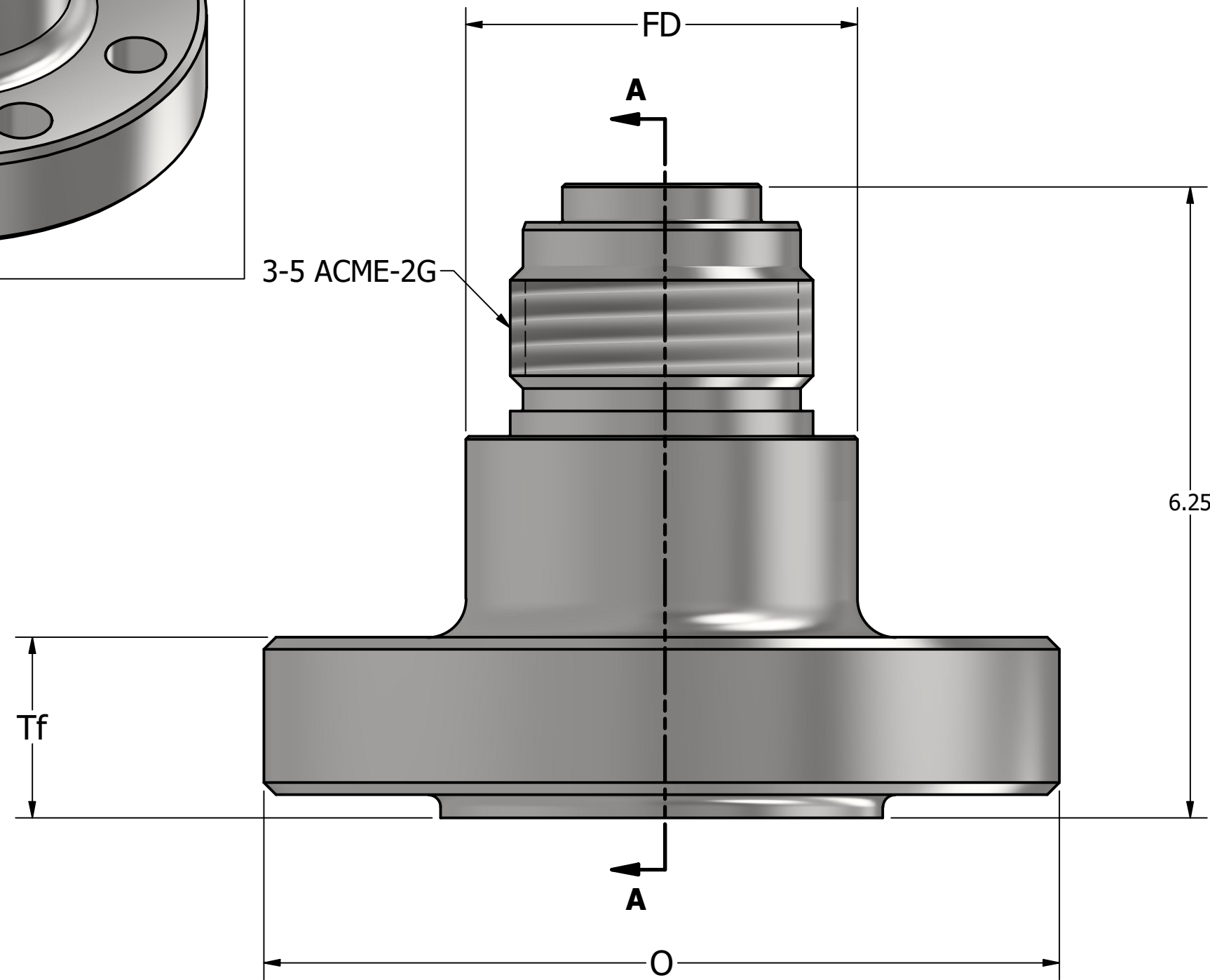
PART NUMBER: FOR 1-3/4" UNF PLUG THREAD: AX2HPJA-APIRRRR-NT-MM
 FOR ACME PLUG THREAD: AX2HPJAAT-APIRRRR-NT-MM

REV	DESCRIPTION	DATE	DESIGNER	APPROVED
A		8/29/2023	LiamAxess	RolandA

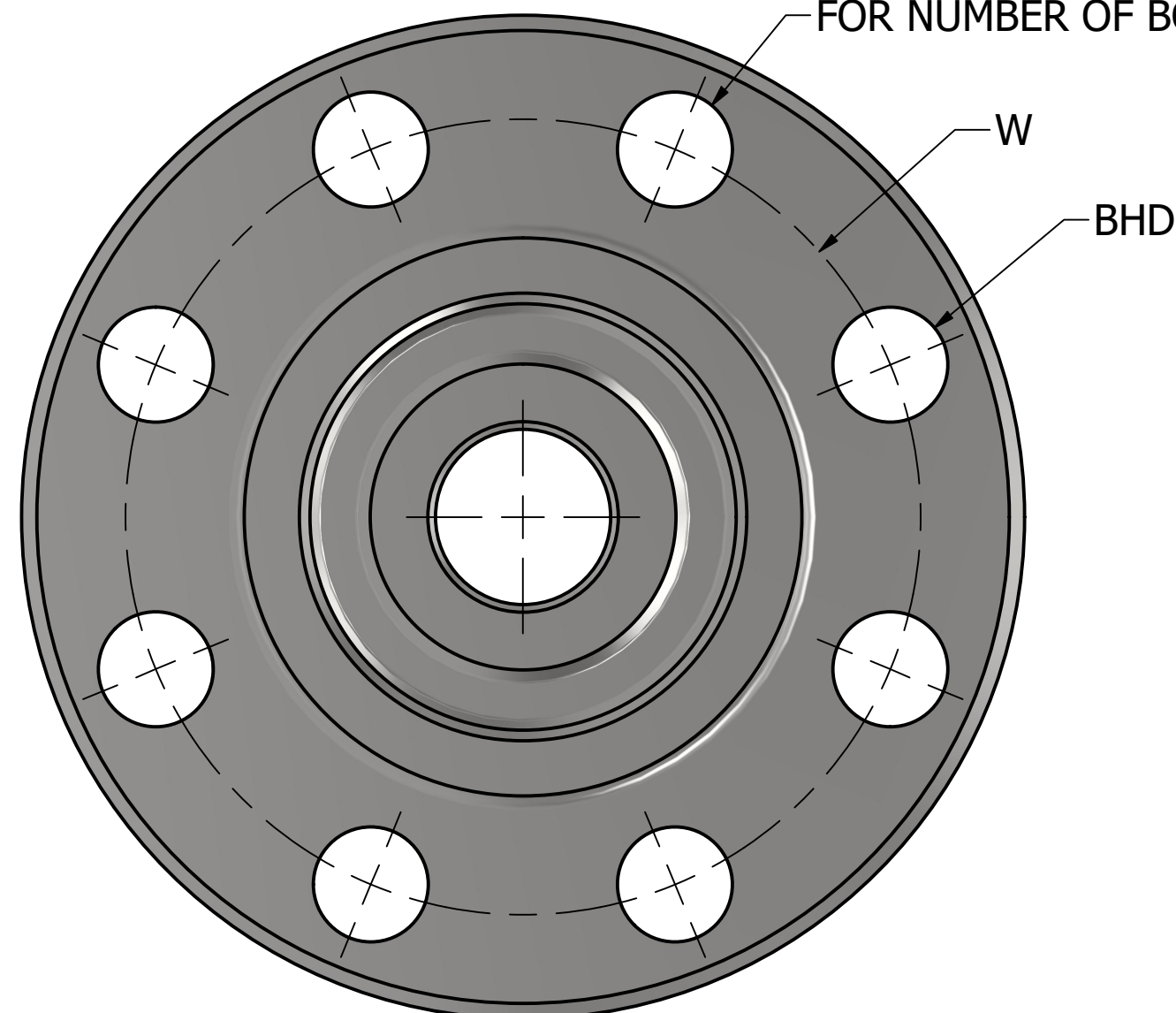


MM = MATERIAL, PLEASE SEE MATERIAL PART NUMBER TABLE

RRRR = FLANGE RATING, PLEASE SEE FLANGE DIMENSION TABLE



FOR NUMBER OF BOLT HOLES SEE FLANGE DIMENSION TABLE



MATERIAL PART NUMBER TABLE

MM	MATERIAL
A3	316/316L SS
A4	A105 CS
A5	A350LF2
A7	F51 DSS
A8	F60 DSS
A9	F53 SDSS
B1	F55 SDSS
B4	HASTELLOY C276
B5	A625
B6	A825
C1	304 SS
C3	6061-T6 AI
C4	A694 F65 CS

* NOTE OTHER MATERIALS ARE AVAILABLE

FLANGE DIMENSION TABLE

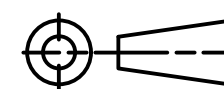
PART NO. RRRR	O	Tf	W	BHD	NO. BOLT HOLES	FD	F	RING NUMBER
2000	6.5	1.31	5	0.75	8	3.31	4.25	R23 OR RX23
5000	8.5	1.81	6.5	1	8	4.12	4.88	R24 OR RX24
10000	7.88	1.73	6.25	0.88	8	3.94	4.38	BX152
15000	8.75	2	6.88	1	8	4.38	4.5	BX152
20000	11.31	2.81	8	1.25	8	6.06	5.19	BX152

UNLESS OTHERWISE SPECIFIED

TOLERANCES: .XX ± .XXX ± ANGLES ±

SURFACE ROUGHNESS: ✓

UNITS: INCHES



CONTROL STANDARDS	SIZE	TITLE	DRAWING NO.
NACE MR0175 API 6A	C	2-1/16" API 6BX, NON-TEE FLANGED ACCESS FITTING	AX2HPJA-APIRRRR-NT-MM
	3/4	MATERIAL SEE PART NUMBER	1 of 1