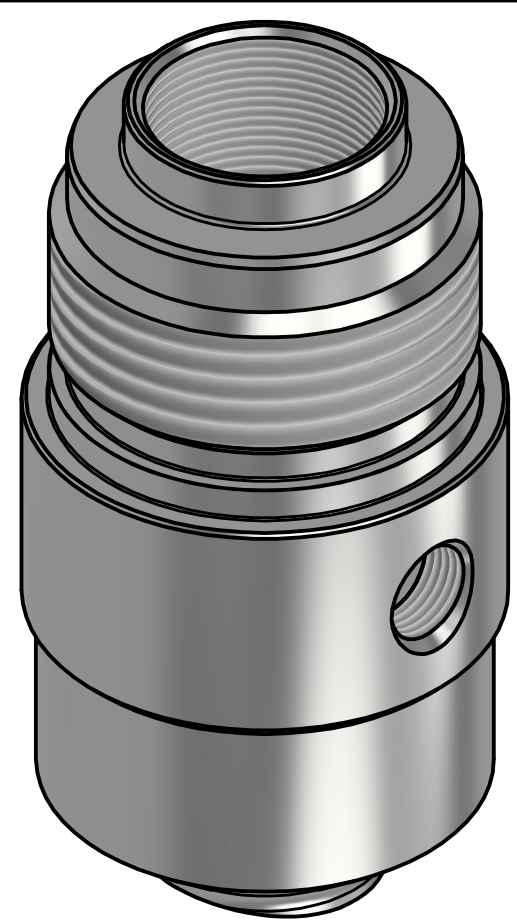


DO NOT SCALE



**PART NUMBER:** FOR 1-3/4" UNF PLUG THREAD: AX2HPJA-FWDD-STXNPT-MM  
 FOR ACME PLUG THREAD: AX2HPJAAT-FWDD-STXNPT-MM

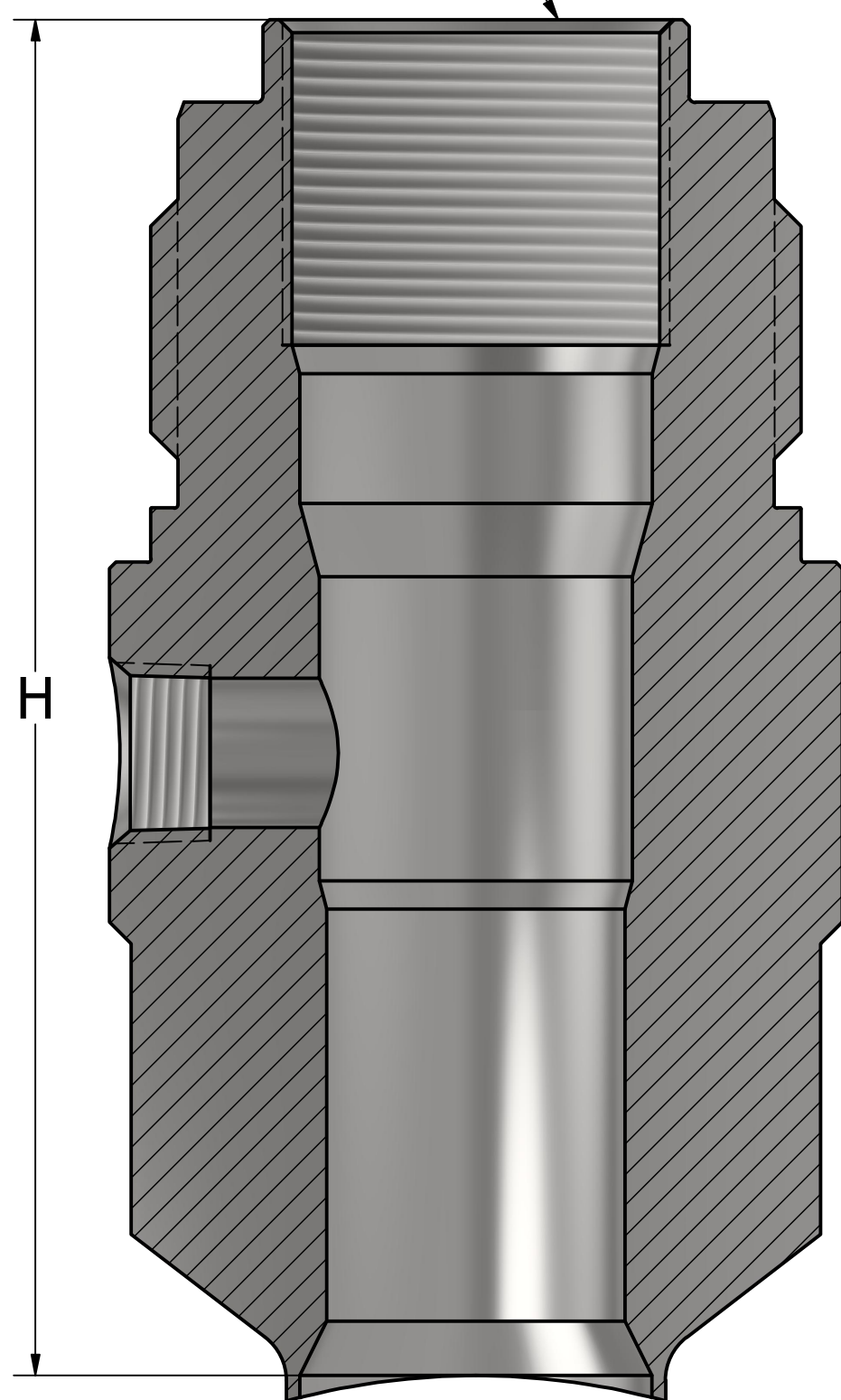
REV	DESCRIPTION	DATE	DESIGNER	APPROVED
A		8/29/2023	LiamAxess	RolandA

MM = MATERIAL, PLEASE SEE MATERIAL PART NUMBER TABLE

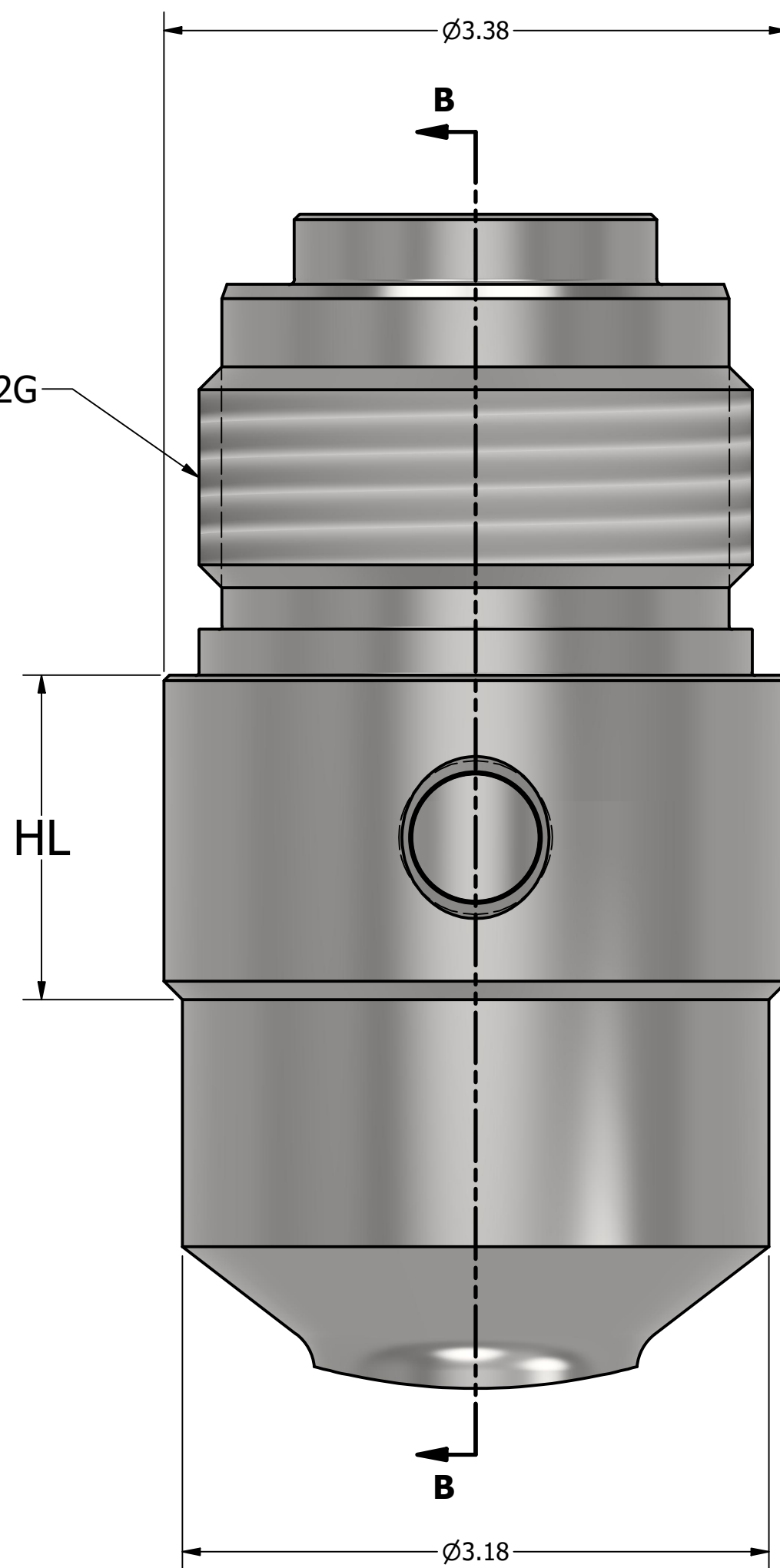
X = TEE SIZE, PLEASE SEE TEE SIZE TABLE

DD = DIAMETER TO SUIT PIPE SIZE, PLEASE SEE DIAMETER PART NUMBER TABLE

1.75-12-2B UN **OR** 1.75-8 STUB ACME - 2G



3-5 ACME-2G



TEE SIZE	1/4"	1/2"	3/4"	1"
H	5.25	6.25	6.25	7.25

TEE SIZE	1/4"	1/2"	3/4"	1"
HL	1.81"	1.81"	1.81"	2.31"

PART NO. DD	PIPE DIAMETER
04	4"
06	6"
10	8-10"
18	12-18"
36	20-36"
FL	> 36"

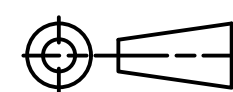
MM	MATERIAL
A3	316/316L SS
A4	A105 CS
A5	A350LF2
A7	F51 DSS
A8	F60 DSS
A9	F53 SDSS
B1	F55 SDSS
B4	HASTELLOY C276
B5	A625
B6	A825
C1	304 SS
C3	6061-T6 AI
C4	A694 F65 CS

\* NOTE OTHER MATERIALS ARE AVAILABLE

**UNLESS OTHERWISE SPECIFIED**  
**TOLERANCES:** .XX ± .XXX ± ANGLES ±  
**SURFACE ROUGHNESS:** ✓  
**UNITS:** INCHES



PART NO. X	SIZE OF TEE
STQ	1/4
STH	1/2
STT	3/4
STO	1



CONTROL STANDARDS	SIZE	TITLE	DRAWING NO.
NACE MR0175	C	2" JANUS FLAREWELD MECHANICAL ACCESS FITTING WITH NPT SIDE TEE	
	1.25 : 1	MATERIAL SEE PART NUMBER	1 of 1